

Hoses, Instrument Panels, Custom Products and Accessories

FOR EXPERIMENTAL AIRCRAFT

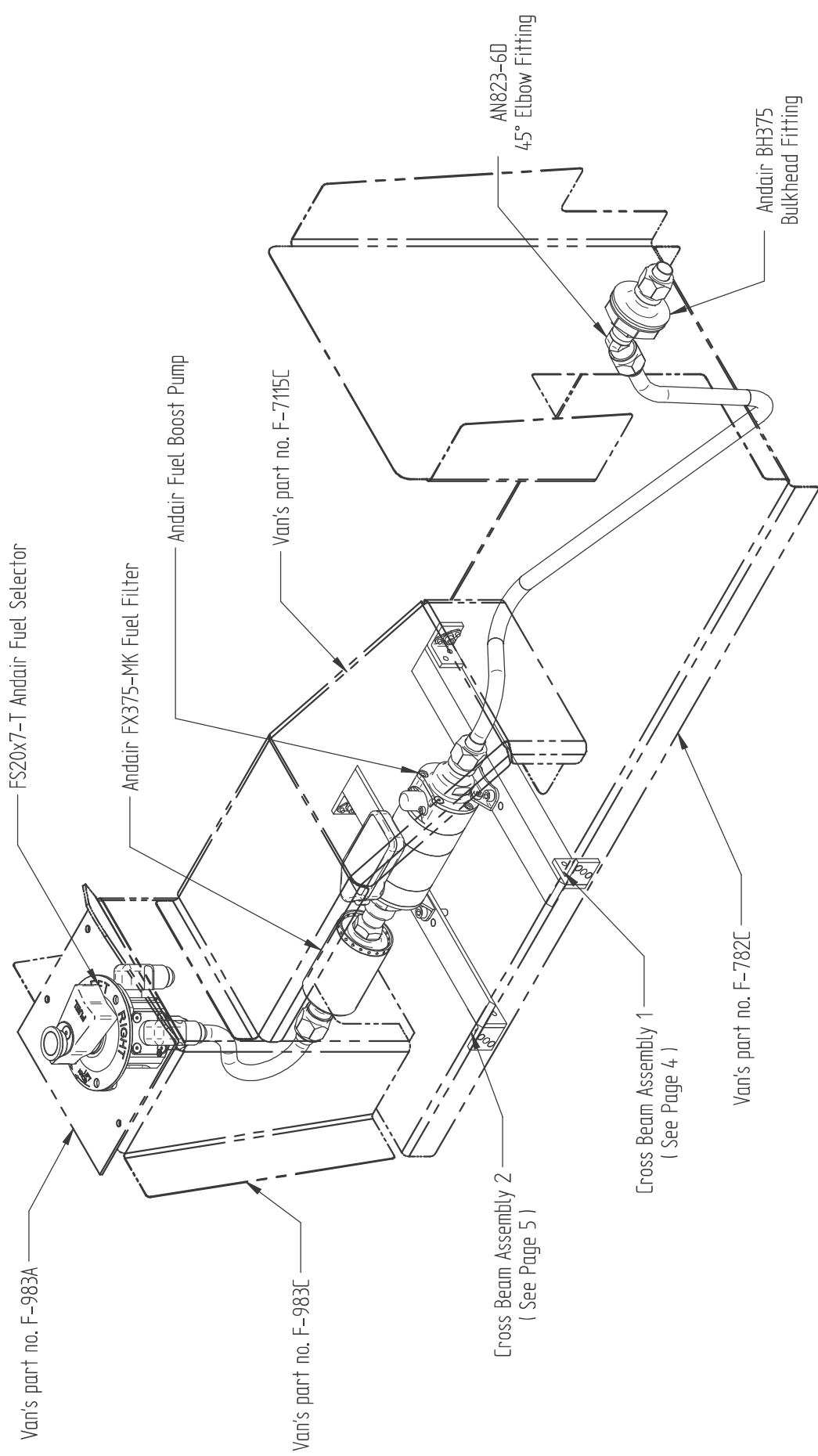


Andair J Tube Installation

Thank you for purchasing your Andair J Tube. This rigid tube assembly is CNC bent and manufactured out of 5052 aluminum to the dimensions that Andair specifies in this manual. Please note that this manual is courtesy of Andair, with a few installation notes that we wanted to add to it.

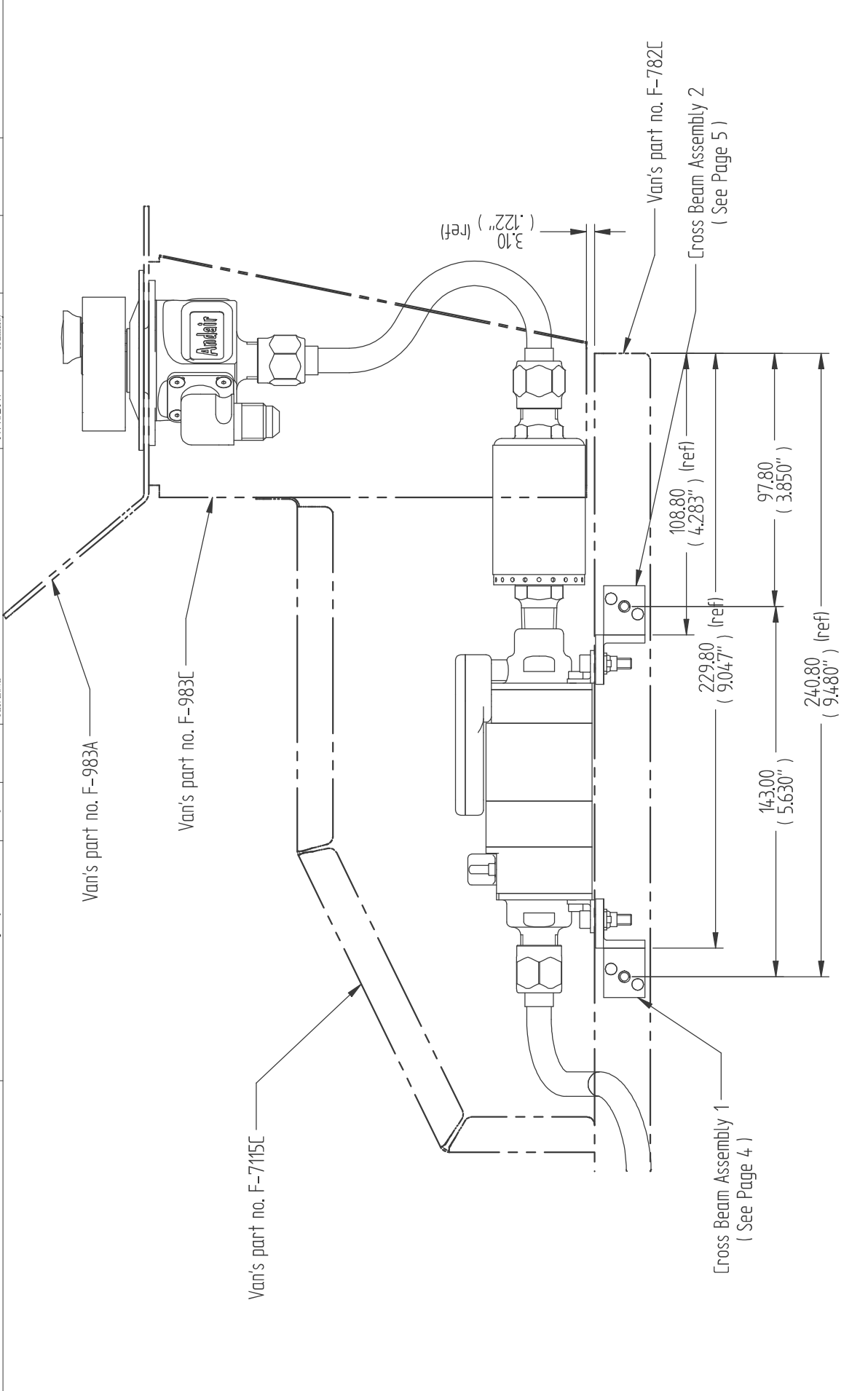
1. When installation the J Tube, we recommend that you finger tighten the J tube to the assembly prior to any final location of the other items. This will ensure that everything is aligned and located properly prior to drilling.
2. The 5052 aluminum tubing that we buy may have slightly variations as far as being perfectly flat. Thus, when we bend it is possible to have a very small variation from tube to tube. This assembly is a drop in installation, but since it is a relatively soft grade tubing, a slight nudge will not damage it if you need to during installation. If you have any questions, please feel free to contact us.
3. Please be especially careful with the nuts. The aluminum collars have to be shortened to allow us to properly flare this tubing. It is important to ensure that the nut and collar are centered on each other and tighten down without binding. You can see the collar on the back of the B-nut. Please ensure that it is centered on the nut and not offset.

Part No.	PVI-PB375-TC		CAD generated drawing. Do not manually update.		Issue	ECN#	Change	Date	Drawn	Checked	Approval	Approval Date
					1		First draw	07/11/2011	A Lindsay			



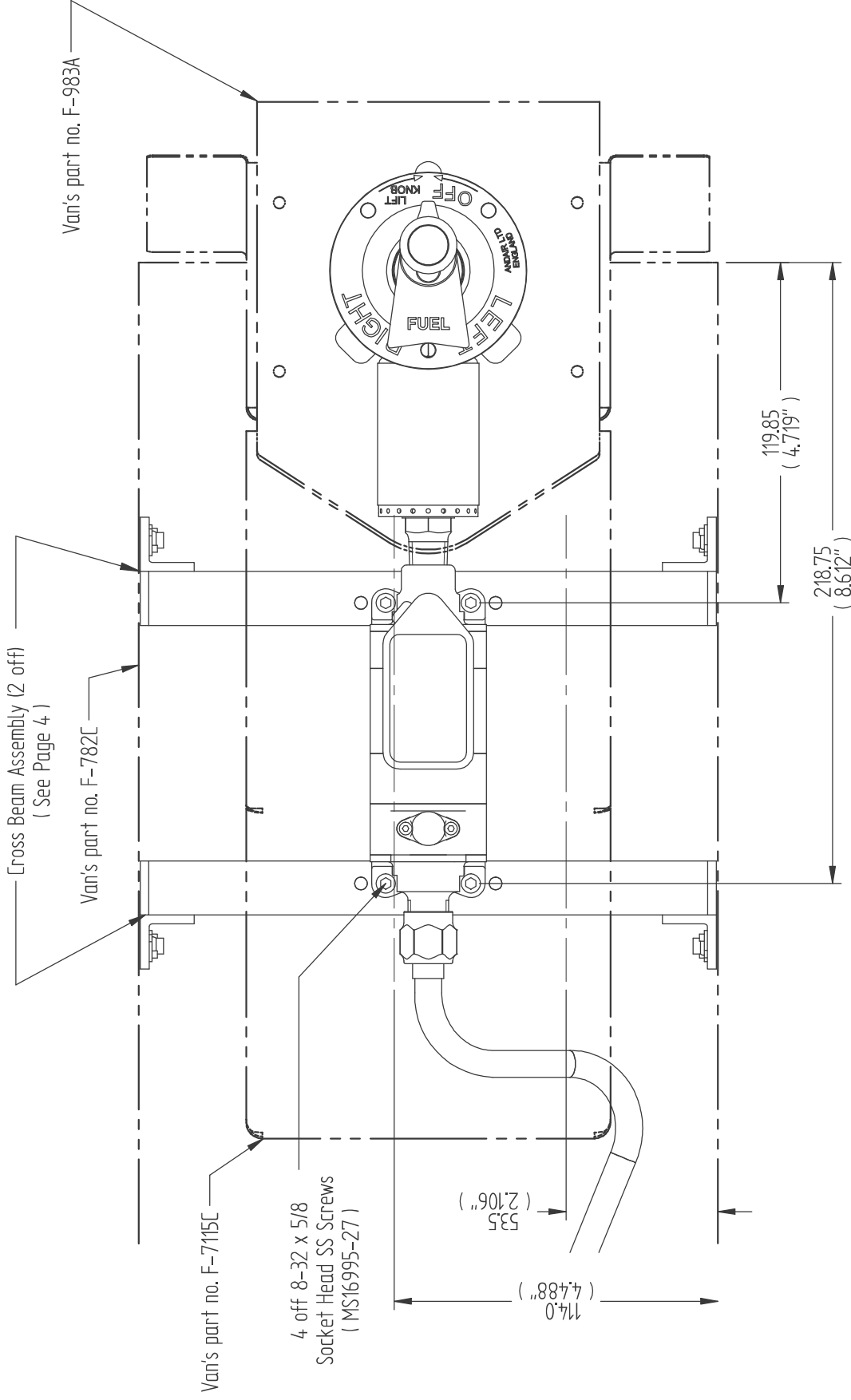
<p>Andair Ltd. OWNS THE COPYRIGHT OF THIS DRAWING WHICH IS SUPPLIED IN CONFIDENCE, AND MUST NOT BE USED FOR ANY PURPOSE OTHER THAN FOR WHICH IT IS SUPPLIED, AND MUST NOT BE REPRODUCED IN WHOLE OR IN PART WITHOUT THE PERMISSION IN WRITING OF THE OWNERS.</p>		<p>All dimensions are in millimeters.</p> <p>Tolerances unless otherwise specified :</p> <p>x. : x.x : x.xx :</p>	<p>RV7 Fuel Pump Installation</p>
<p>Andair Ltd.</p>		<p>Page 1 of 6</p>	<p>Part No. PVI-PB375-TC</p>

Part No.	PVI-PB375-TC	CAD generated drawing. Do not manually update.	Issue	ECN#	Change	Date	Drawn	Checked	Approval	Approval Date
			1		First drawn	07/11/2011	A Lindsay			



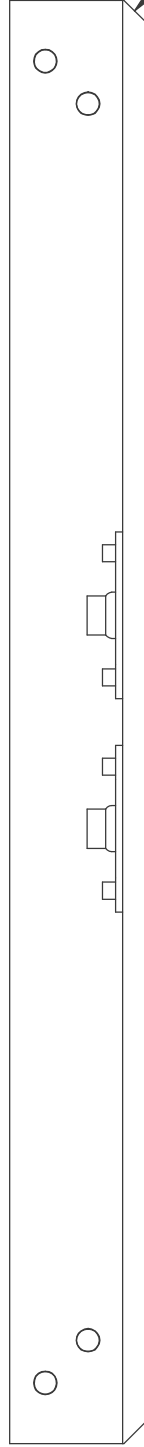
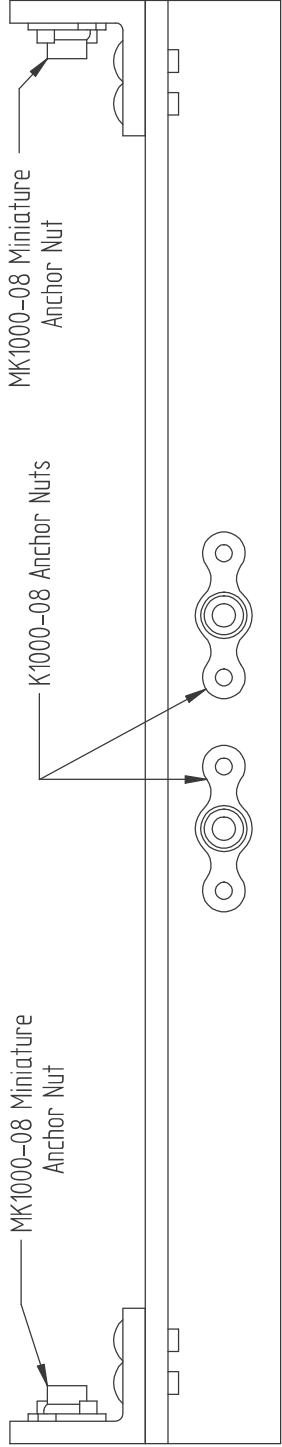
<p>Andair Ltd.</p> <p><small>Andair Ltd. OWNS THE COPYRIGHT OF THIS DRAWING WHICH IS SUPPLIED IN CONFIDENCE, AND MUST NOT BE USED FOR ANY PURPOSE OTHER THAN FOR WHICH IT IS SUPPLIED, AND MUST NOT BE REPRODUCED IN WHOLE OR IN PART WITHOUT THE PERMISSION IN WRITING OF THE OWNERS.</small></p>		<p>All dimensions are in millimeters.</p> <p>Tolerances unless otherwise specified :</p> <p>x. : x.x : x.xx :</p>			<p>Description:</p> <p>RV7 Fuel Pump Installation</p>
		<p>Page 2 of 6</p>			<p>Part No.</p> <p>PVI-PB375-TC</p>

Part No.	PVI-PB375-TC	CAD generated drawing. Do not manually update.	Issue	ECN#	Change	Date	Drawn	Checked	Approval	Approval Date
			1		First drawn	07/11/2011	A Lindsay			

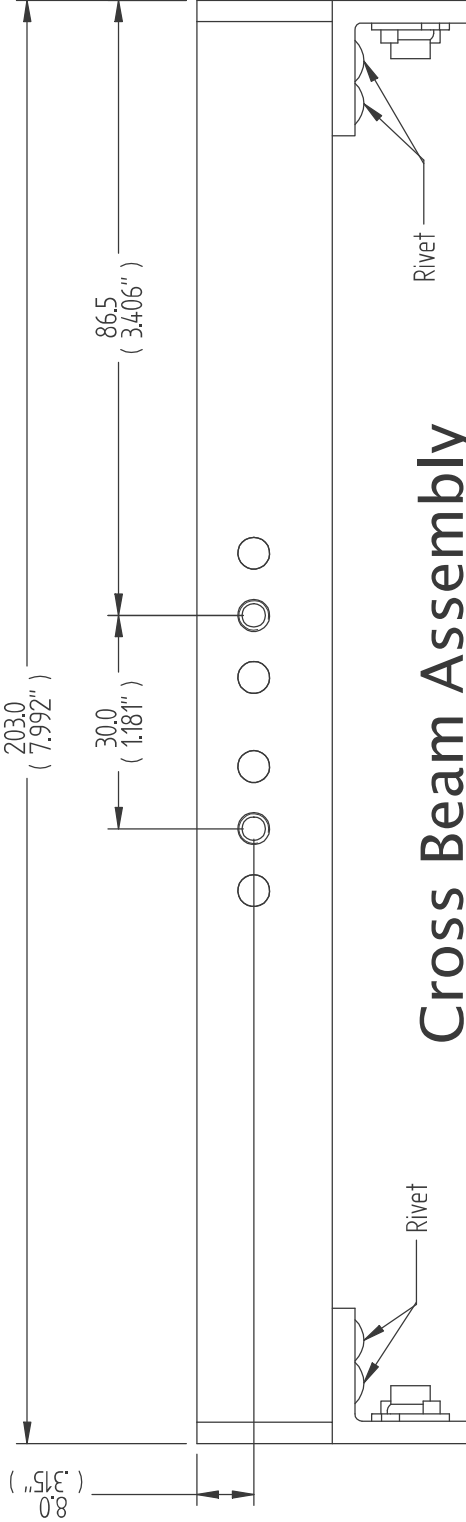


<p>Andair Ltd.</p> <p><small>Andair Ltd. OWNS THE COPYRIGHT OF THIS DRAWING WHICH IS SUPPLIED IN CONFIDENCE, AND MUST NOT BE USED FOR ANY PURPOSE OTHER THAN FOR WHICH IT IS SUPPLIED, AND MUST NOT BE REPRODUCED IN WHOLE OR IN PART WITHOUT THE PERMISSION IN WRITING OF THE OWNERS.</small></p>		<p>All dimensions are in millimeters.</p> <p>Tolerances unless otherwise specified :</p> <p>x. : x.x : x.xx :</p>			<p>Description:</p> <p>RV7 Fuel Pump Installation</p>
		<p>Page 3 of 6</p>		<p>Part No.</p> <p>PVI-PB375-TC</p>	

Part No.	PVI-PB375-TC	CAD generated drawing. Do not manually update.	Issue	ECN#	Change	Date	Drawn	Checked	Approval	Approval Date
			1		First drawing	07/11/2011	A Lindsay			



Relieve corner to clear radius in F-782C (both ends)



Cross Beam Assembly

Material: 3/4" x 3/4" x 1/8" Aluminium Angle

Andair Ltd. OWNS THE COPYRIGHT OF THIS DRAWING WHICH IS SUPPLIED IN CONFIDENCE, AND MUST NOT BE USED FOR ANY PURPOSE OTHER THAN FOR WHICH IT IS SUPPLIED, AND MUST NOT BE REPRODUCED IN WHOLE OR IN PART WITHOUT THE PERMISSION IN WRITING OF THE OWNERS.

All dimensions are in millimeters.

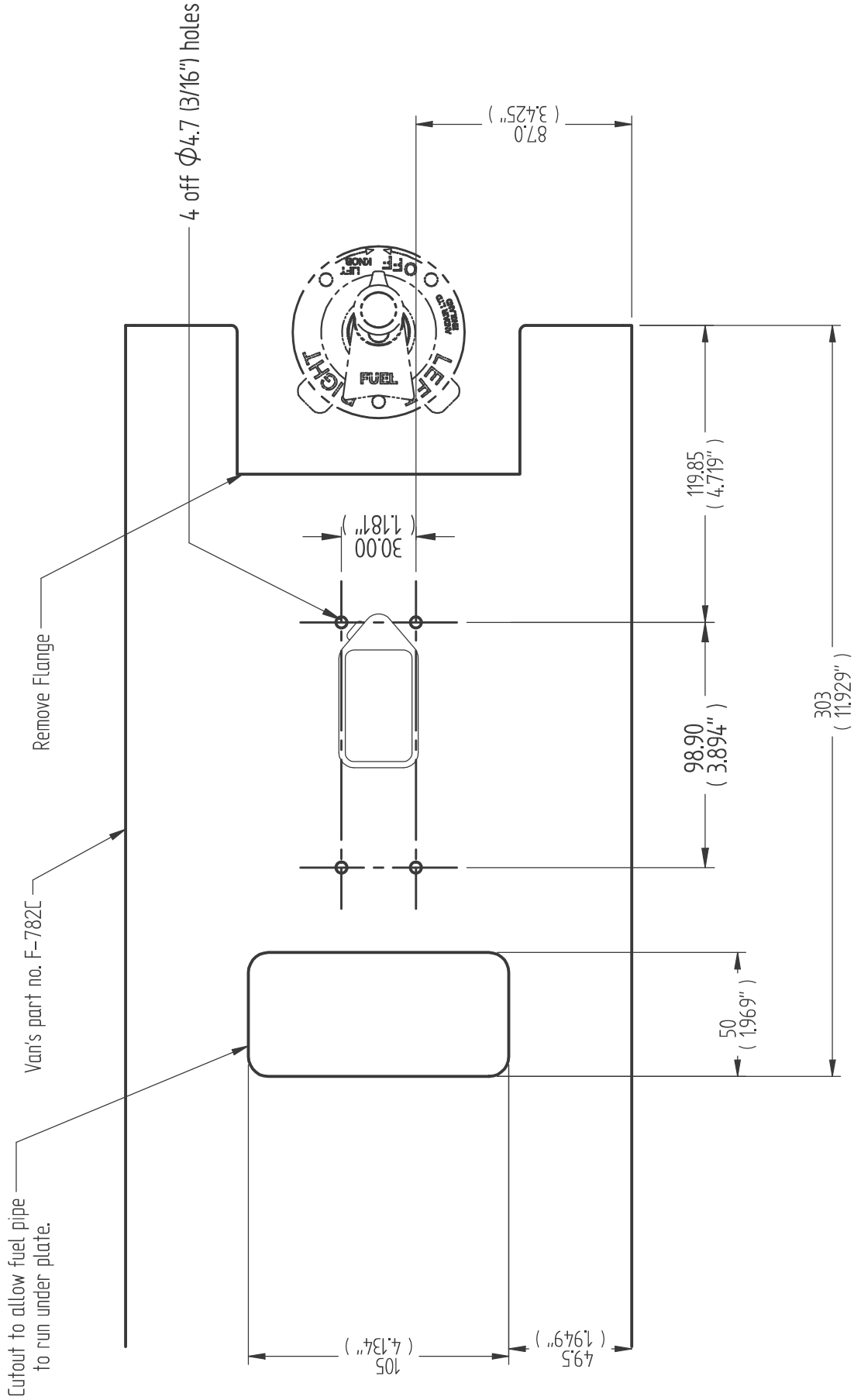


Description:
RV7 Fuel Pump Installation

Andair Ltd.

Tolerances unless otherwise specified :
x. :
x.x :
x.xx :

Part No.	PVI-PB375-TC	CAD generated drawing. Do not manually update.	Issue	ECN#	Change	Date	Drawn	Checked	Approval	Approval Date
			1		First drawn	07/11/2011	A.Lindsay			



All dimensions are in millimeters.
Tolerances unless otherwise specified :
x. :
x.x :
x.xx :

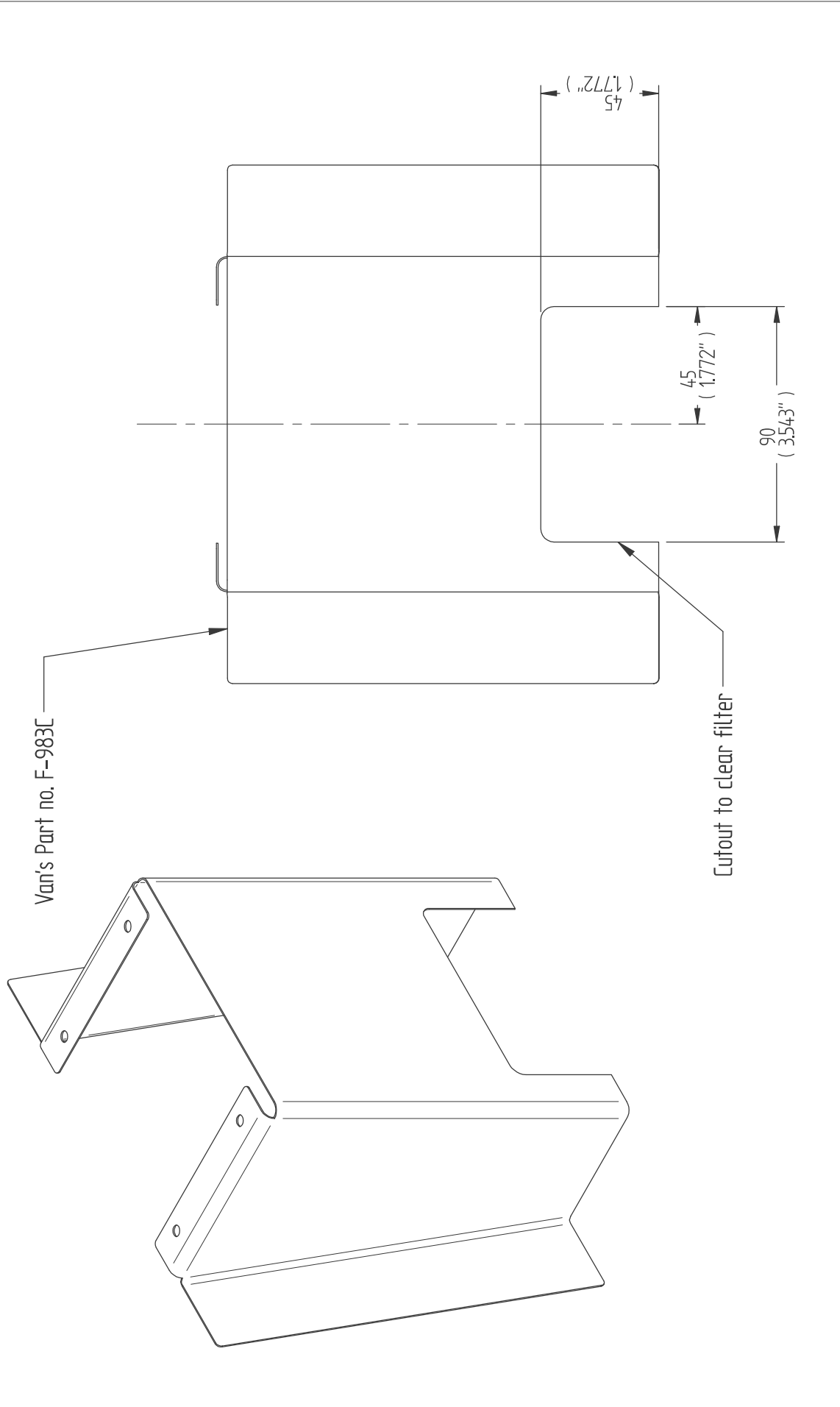
Description: RV7 Fuel Pump Installation
Part No. PVI-PB375-TC

Page 5 of 6

Andair Ltd.

Andair Ltd. OWNS THE COPYRIGHT OF THIS DRAWING WHICH IS SUPPLIED IN CONFIDENCE, AND MUST NOT BE USED FOR ANY PURPOSE OTHER THAN FOR WHICH IT IS SUPPLIED, AND MUST NOT BE REPRODUCED IN WHOLE OR IN PART WITHOUT THE PERMISSION IN WRITING OF THE OWNERS.

Part No.	PVI-PB375-TC	CAD generated drawing. Do not manually update.	Issue	1	ECN#	Change First draw	Date	07/11/2011	Drawn	A. Lindsay	Checked	Approval	Approval Date
----------	--------------	---	-------	---	------	----------------------	------	------------	-------	------------	---------	----------	---------------



<p>Andair Ltd.</p> <p><small>Andair Ltd. OWNS THE COPYRIGHT OF THIS DRAWING WHICH IS SUPPLIED IN CONFIDENCE, AND MUST NOT BE USED FOR ANY PURPOSE OTHER THAN FOR WHICH IT IS SUPPLIED, AND MUST NOT BE REPRODUCED IN WHOLE OR IN PART WITHOUT THE PERMISSION IN WRITING OF THE OWNERS.</small></p>	<p>All dimensions are in millimeters.</p> <p>Tolerances unless otherwise specified :</p> <p>x. : x.x : x.xx :</p>		<p>Description:</p> <p>RV7 Fuel Pump Installation</p>
	<p>Page 6 of 6</p>	<p>Part No.</p> <p>PVI-PB375-TC</p>	